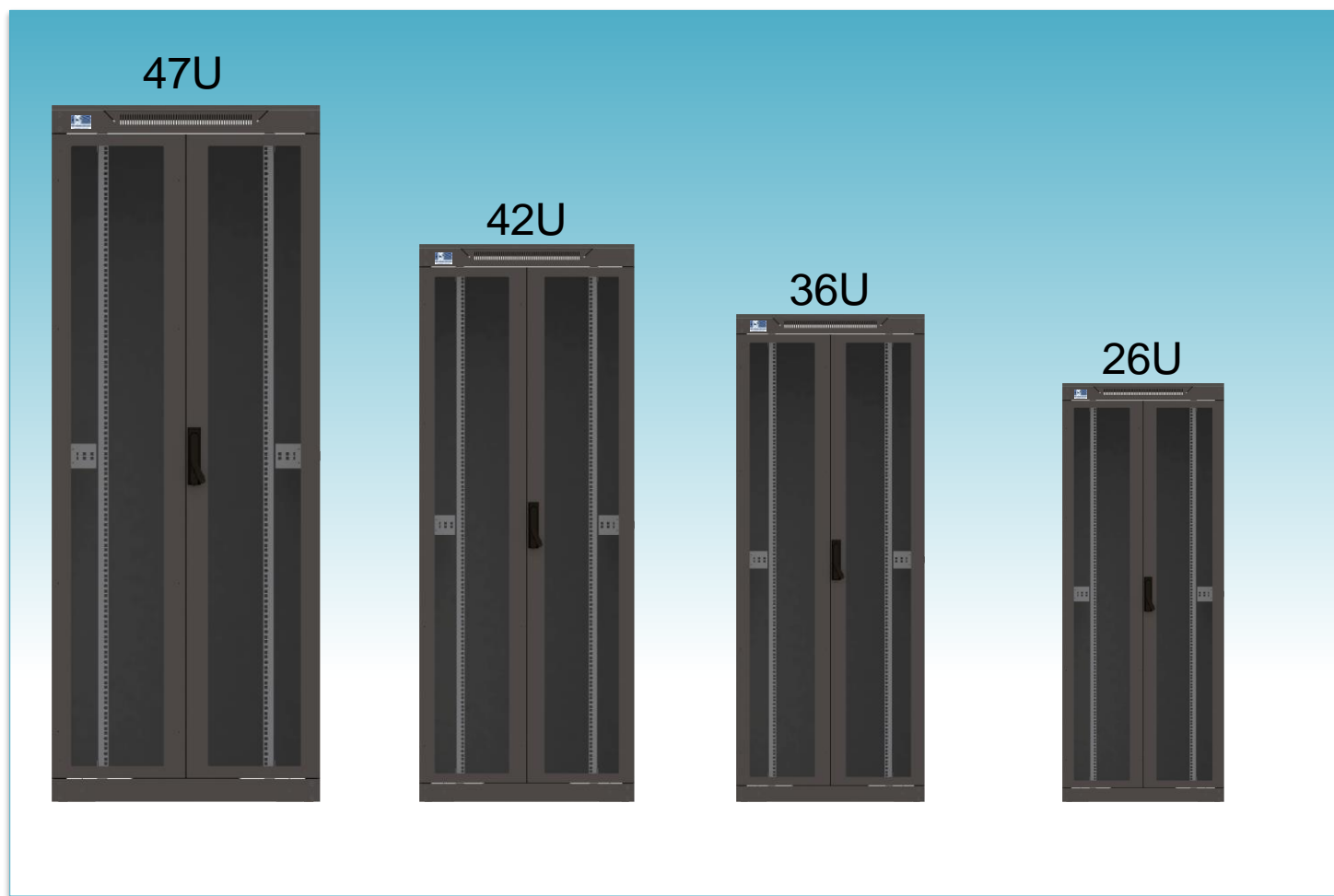


800x1000 Free Standing Cabinets



Description

HCS DataLine series includes a wide range of high quality racks, cabinets and enclosures, specially designed for structured premise cabling in local area networks (LANs), including distribution and equipment, cross connect cabinets and racks, splice boxes, climate control and many more components for both copper and fiber optic cabling systems.

HCS DataLine 10 800x1000 Free Standing Cabinets are suitable for both office environments & equipment rooms, having an attractive design combined with a long-lasting, solid & stable construction, guaranteed by the HCS DataLine Logo & Trademark

Applications

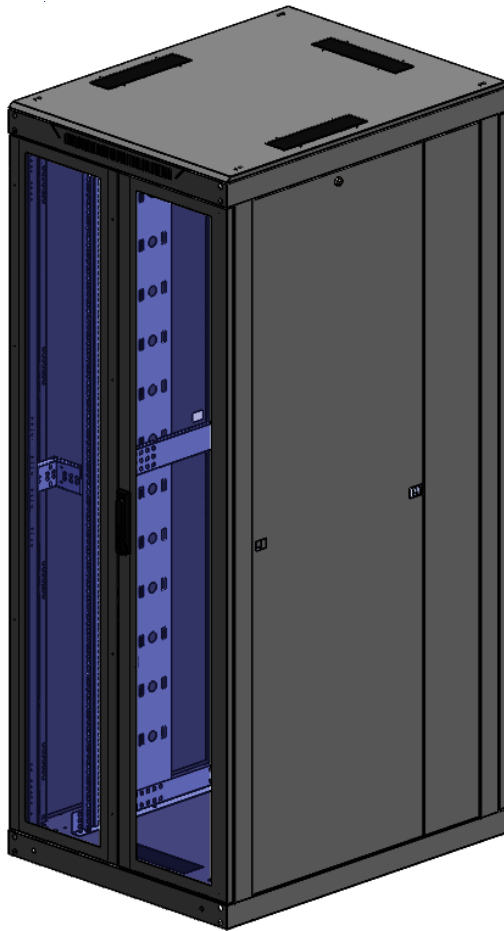
The special design of HCS DataLine 10 Free Standing Cabinets allows the use of a large variety and types of accessories, including 19" panels, hubs and active equipment, fixed and/or sliding shelves, fan units, power strips, pulleys, grounding and potential equalization bus bars, lighting units, stacking kits, floor fixing kits, cable management panels, and many other 19" devices and accessories

Qualifications and Approvals

HCS DataLine 10 Free Standing Cabinets are supported by HCS DoubleSafe™ QA Program and they comply to the following standards:

General	Steel Sheets	Powder Coating	Mechanical	Assembly	IT equipment safety	Fan Unit & Power Strips
<input type="checkbox"/> TS EN 60297-3-100/101/102 <input type="checkbox"/> DIN 41494 <input type="checkbox"/> TS EN 60529-1 <input type="checkbox"/> IP20 (Optional IP 42)	<input type="checkbox"/> DIN EN 10130-91 <input type="checkbox"/> DIN EN 10327 <input type="checkbox"/> EREĞLİ 6112	<input type="checkbox"/> DIN 67530 <input type="checkbox"/> ASTM D 2796 <input type="checkbox"/> ASTM D 3451	<input type="checkbox"/> TS EN 61587-1	<input type="checkbox"/> TS EN 60917-2-1/-2	<input type="checkbox"/> TS EN 60950-1 <input type="checkbox"/> IEC 60364-7-707	<input type="checkbox"/> TS EN 60439-1 <input type="checkbox"/> TS EN 62208

800x1000 Free Standing Cabinets



GENERAL PROPERTIES	
MATERIAL	Sheet & Galvanized steel. 1.0/1.2/1.5/2.0 mm thickness.
PAINT AND COLOR	Special steel finish with electrostatic powder coat, RAL 9005 black. Other colors available upon request.
FRONT DOOR	Double opening framed glass door, multipoint europrofile cylinder lock. (135 degree opening)
REAR DOOR	Double opening solid door, multipoint europrofile cylinder lock. (135 degree opening)
SIDE PANEL	Removable side panels, cylinder locking. Sliding locking
TOP CHASSIS	300 x 70mm brushed cable entry hole, 6x optional ventilation units
BOTTOM CHASSIS	300 x 70mm brushed cable entry hole, 3x, Sliding brushed cable entry 300 x 300mm 1x
19" PROFILES	Adjustable 4 units (U marked 2x front) 2x rear
VERTICAL CABLE ORGANIZER	Mountable front left & right vertically (optional).
SIDE VERTICAL OPEN CABLE ORGANIZER	Mountable side left / right- galvanised.
PDU	9 Way schuko type power strip
GROUNDING	Grounding Cable
LOADING CAPACITY	1500 kg max. (42U, TS EN 61587-1).

General	Steel Sheets	Powder Coating	Mechanical	Assembly	IT equipment safety	Fan Unit & Power Strips
<input type="checkbox"/> TS EN 60297-3-100/101/102 <input type="checkbox"/> DIN 41494 <input type="checkbox"/> TS EN 60529-1 <input type="checkbox"/> IP20 (Optional IP 42)	<input type="checkbox"/> DIN EN 10130-91 <input type="checkbox"/> DIN EN 10327 <input type="checkbox"/> EREĞLİ 6112	<input type="checkbox"/> DIN 67530 <input type="checkbox"/> ASTM D 2796 <input type="checkbox"/> ASTM D 3451	<input type="checkbox"/> TS EN 61587-1	<input type="checkbox"/> TS EN 60917-2-1/-2	<input type="checkbox"/> TS EN 60950-1 <input type="checkbox"/> IEC 60364-7-707	<input type="checkbox"/> TS EN 60439-1 <input type="checkbox"/> TS EN 62208

CABINETS ACCESSORIES



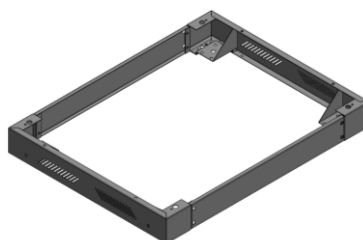
Ventilation units



Horizontal organizer



9 WAY PDU 19" PDU



Plinth



Grounding Busbar



Wheel

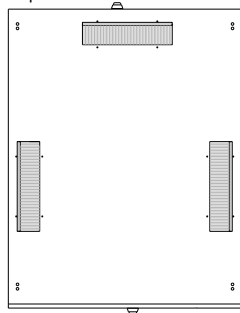


Organizer with front cover

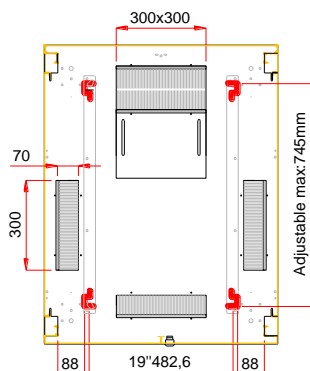
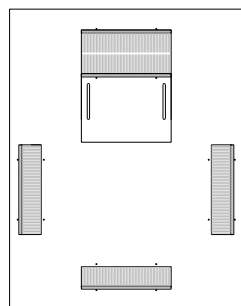
HCS P/N	Description	internal Height mm	Width mm	Depth mm	Height mm	Net Weight Kg	Notes
C10-01680 EU	16U 19" (w800 x d1000)mm DATALINE™10 FREE STANDING NETWORK CABINET (Double opening framed glass front doors, with multi point euro profile cylinder lock,6 pcs brush)	712	780	1000	862	N/A	
C10-02080 EU	20U 19" (w800 x d1000)mm DATALINE™10 FREE STANDING NETWORK CABINET (Double opening framed glass front doors, with multi point euro profile cylinder lock,6 pcs brush)	890	780	1000	1040	N/A	
C10-02280 EU	22U 19" (w800 x d1000)mm DATALINE™10 FREE STANDING NETWORK CABINET (Double opening framed glass front doors, with multi point euro profile cylinder lock,6 pcs brush)	980	780	1000	1130	N/A	
C10-02680 EU	26U 19" (w800 x d1000)mm DATALINE™10 FREE STANDING NETWORK CABINET (Double opening framed glass front doors, with multi point euro profile cylinder lock,6 pcs brush)	1156	780	1000	1306	N/A	
C10-03280 EU	32U 19" (w800 x d1000)mm DATALINE™10 FREE STANDING NETWORK CABINET (Double opening framed glass front doors, with multi point euro profile cylinder lock,6 pcs brush)	1422	780	1000	1572	N/A	
C10-03680 EU	36U 19" (w800 x d1000)mm DATALINE™10 FREE STANDING NETWORK CABINET (Double opening framed glass front doors, with multi point euro profile cylinder lock,6 pcs brush)	1600	780	1000	1750	N/A	
C10-03980 EU	39U 19" (w800 x d1000)mm DATALINE™10 FREE STANDING NETWORK CABINET (Double opening framed glass front doors, with multi point euro profile cylinder lock,6 pcs brush)	1734	780	1000	1884	N/A	
C10-04280 EU	42U 19" (w800 x d1000)mm DATALINE™10 FREE STANDING NETWORK CABINET (Double opening framed glass front doors, with multi point euro profile cylinder lock,6 pcs brush)	1867	780	1000	2028	N/A	
C10-04480 EU	44U 19" (w800 x d1000)mm DATALINE™10 FREE STANDING NETWORK CABINET (Double opening framed glass front doors, with multi point euro profile cylinder lock,6 pcs brush)	1956	780	1000	2106	N/A	
C10-04780 EU	47U 19" (w800 x d1000)mm DATALINE™10 FREE STANDING NETWORK CABINET (Double opening framed glass front doors, with multi point euro profile cylinder lock,6 pcs brush)	2090	780	1000	2240	N/A	

800x1000 Free Standing Cabinets

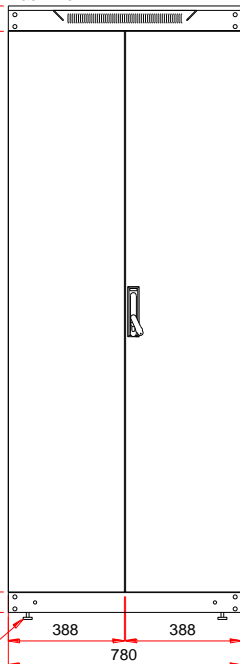
Top View



Bottom Chassis

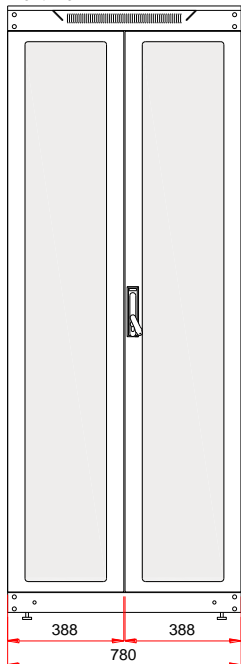


Back View

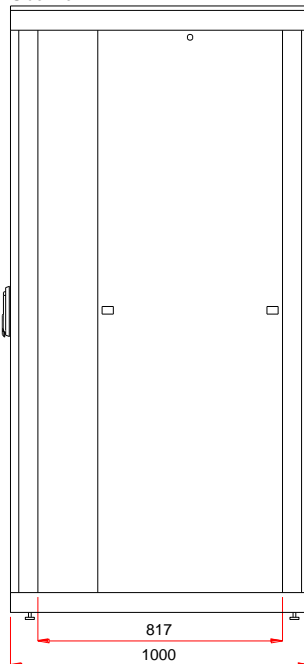


Adjustable Leveling Feet / 4 pcs

Front View



Side View



Without front door View

